



PRODUCT SHEET

GoldStar / GoldFlow Cocktails

Main Applications

Liquid scintillation counting of aqueous and organic samples.

Packing

Order N°.	Description	Packing
ME-COC-GS1	Gold Star multi-purpose liquid scintillation cocktail	2 x 5 Liter plastic bottles in a box
ME-COC-GF1	Gold Flow multi-purpose flow scintillation cocktail	2 x 5 Liter plastic bottles in a box

Physical and chemical properties

Solvent : DIN

Flash point : 140 °C

Conditions of utilization

Recommended T of utilization: 15 – 20°C

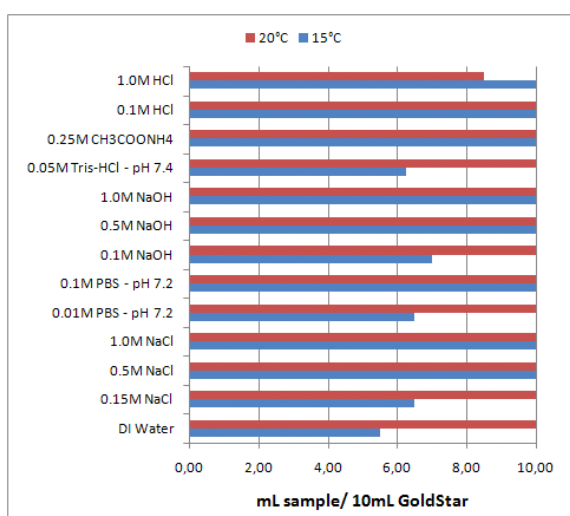
Storage: Dry and dark, T<30°C

TECHNICAL INFORMATION

GoldStar / GoldFlow COCKTAILS



GoldStar and GoldFlow cocktails are classical high flashpoint DIN based, biodegradable multipurpose LSC cocktails designed for high sample capacity and counting efficiency. GoldStar cocktails contain NPEs and are thus not drain disposable.



Gold Star

High sample capacity, high counting efficiency cocktail for aqueous and organic samples. The Cocktail will accept 10 mL of many dilute samples and lesser amounts of more concentrated samples in 10 mL of cocktail. Accepts > 3mL urine in 10mL of cocktail.

Figure 1: Uptake by 10mL GoldStar of various aqueous solutions at 15 and 20°C.

Table 1 shows the result of a series of experiments performed by James Thomson (Meridian Biotechnologies Ltd.) testing the maximum accepted volume of four liquid scintillation cocktails for aqueous solutions most commonly used for radionuclide elution from our extraction chromatographic resins.

Table 1: Uptake of typical eluting agents in 10 mL of four different Meridian LSC cocktails at 20°C

Capacities @20° C	Gold Star	Gold Star LT2	ProSafe+	ProSafe HC+
0.1M citric acid	10.0 ml	0.75 - 10.0 ml	3.25 ml	7.5 ml
0.1M ammonium citrate	10.0 ml	1.25 - 7.5 ml	2.75 ml	5.5 ml
0.1M EDTA	10.0 ml	2.25 - 4.5 ml	3.40 ml	5.25 ml
0.05M HNO ₃	10.0 ml	10.0 ml	3.75 ml	10.0 ml
0.35M HNO ₃	10.0 ml	10.0 ml	5.75 ml	10.0 ml
2M HNO ₃	4.25 ml	2.75 ml	2.75 ml	4.5 ml
3M HNO ₃	3.25 ml	2.25 ml	2.25 ml	4.25 ml
4M HNO ₃	2.75 ml	2.25 ml	2.50 ml	4.0 ml

TECHNICAL INFORMATION

Gold Flow

Non-gelling, low-viscosity, high counting efficiency cocktail for Methanol / Water and Acetonitrile / Water gradients.

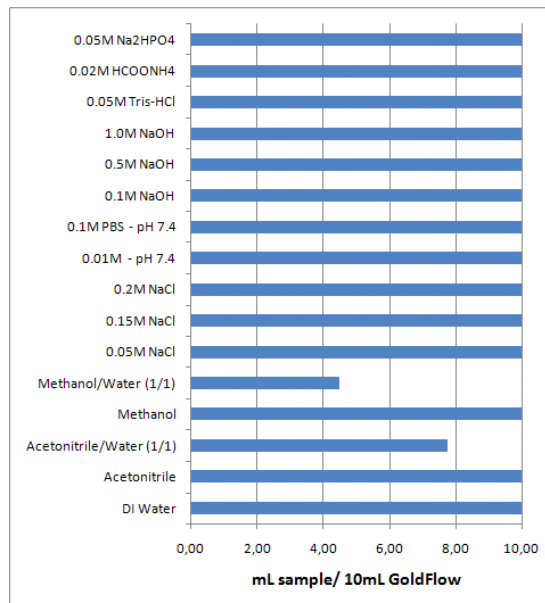


Figure 2: Uptake by 10mL GoldFlow of various aqueous solutions.